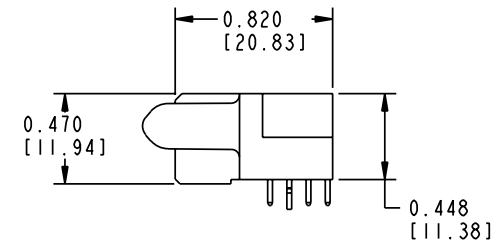
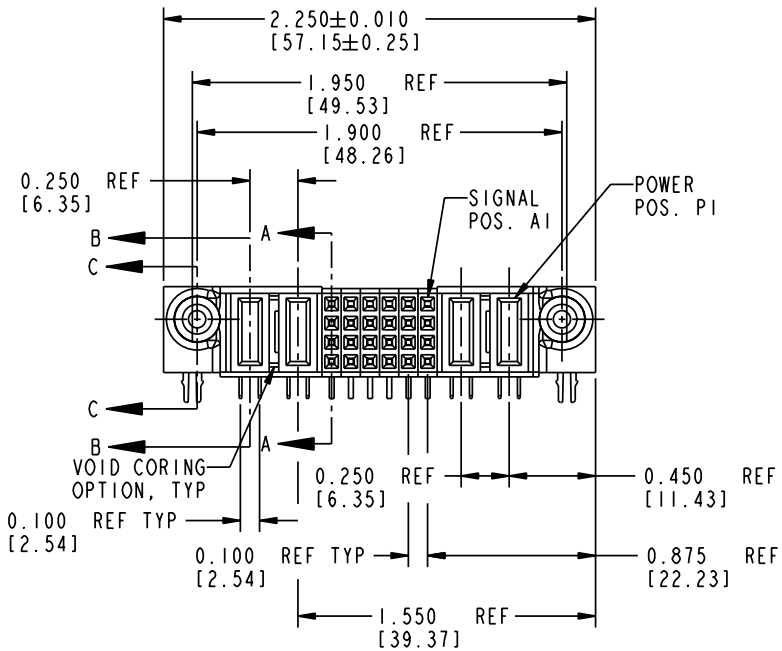


Tous droits strictement réservés. Reproduction ou communication o des liers interdite sous quelque forme que ce soit sans autorisation écrite du propriétaire. Propriete de c FCI. Drois de reproduction FCI.

All rights strictly reserved. Reproduction or issue to third parties in any form whatever is not permitted without written authority from the proprietor. Property of FCI. Copyright FCI.

FCI

PRODUCT No.	ROWS	POWER		SIGNAL						POWER		E1			
		E2	P4	P3	6	5	4	3	2	1	P2		P1		
51760-10202402AA... NOTE ③	D C B A		PA	PA	H	H	H	H	H	H	H	H	PA	PA	
					F	F	F	F	F	F	F	F			
					E	E	E	E	E	E	E	E			



CODE	CONTACT TYPE
E	SIGNAL
F	SIGNAL
G	SIGNAL
H	SIGNAL
PA	POWER
HA	HOLD-DOWN

mat'l code				NOTE 1	tolerances unless otherwise specified	CUSTOMER		www.fciconnect.com
lfr	ecn no.	dr	date	linear	.XX±.01/0.X±0.3	COPY		
A	V11536	JWS	05-10-01	linear	.XXX±.005/0.XX±0.13	projection	title 2P + 24S + 2P	
B	V21511	CGD	09/23/02	angles	.XXX±.0020/0.XXX±0.051		RIGHT ANGLE SOLDER RECEPTACLE	
C	DG05-0027	SW	02/23/05	angles	0°±2°	scale	product family	code
				dr	J. SHAFFER 05-10-01	1:1	PwrBlade	213
				enrg	J. ALLISON 05-10-01		size	sheet
				chr	J. ALLISON 05-10-01		51760-10202402AA	1 of 3
				appd	J. ALLISON 05-10-01			
sheet index	revision sheet	C	C	C				
		1	2	3				

Pro/E

PDM: Rev: C

STAT: 23526 Printed: Aug 14, 2007

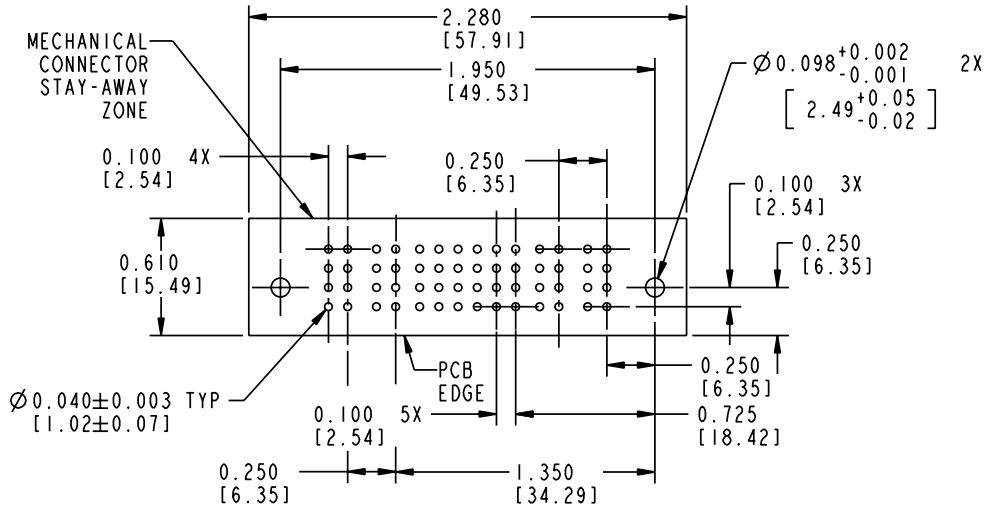
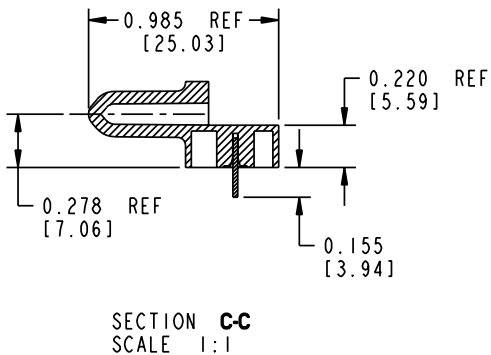
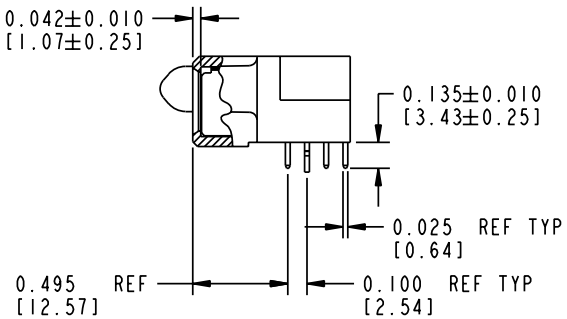
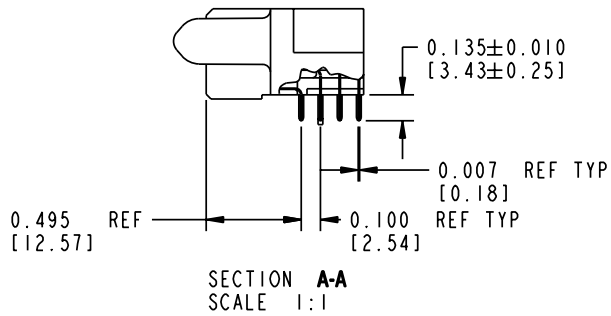
Tous droits strictement réservés. Reproduction ou communication a des tiers interdite sous quelque forme que ce soit sans autorisation écrite du propriétaire. Propriété de c FCI. Droits de reproduction FCI.

All rights strictly reserved. Reproduction or issue to third parties in any form whatever is not permitted without written authority from the proprietor. Property of FCI. Copyright FCI.

FCI

PRODUCT NUMBER

51760-10202402AA...
NOTE ③



mat'l code				NOTE 1		tolerances unless otherwise specified		CUSTOMER		FCI	
lfr	ecn no.	dr	date	linear	.XX±.01/0.X±0.3	projection	COPY		www.fciconnect.com		
c				angles	.XXX±.005/0.XX±0.13	INCH/MM	title		2P + 24S + 2P		
				dr	.XXX±.0020/0.XXX±0.051	scale	product family		PwrBlade		
				enrg	0° ± 2°	1:1	size		213		
				chr	J. SHAFFER 05-10-01		product family		PwrBlade		
				appd	J. ALLISON 05-10-01		size		213		
					J. ALLISON 05-10-01		dwg no		sheet		
					J. ALLISON 05-10-01		dwg no		2		
sheet index	revision sheet						code		2		
							code		2		

Pro/E

PDM: Rev: C

STAT: Released 23526

Printed: Aug 14, 2007

PRODUCT NUMBER

51760-10202402AA...
NOTE ③

NOTES:

1. DIMENSIONS AND TOLERANCES ARE IN ACCORDANCE WITH ASME Y14.5M, 1994 UNLESS OTHERWISE SPECIFIED.

CONNECTOR NOTES:

2. HOUSING MATERIAL: UL 94 V-0 GLASS FILLED HIGH-TEMP THERMOPLASTIC
POWER CONTACT MATERIAL: COPPER ALLOY
SIGNAL PIN MATERIAL: COPPER ALLOY

3. PLATING:
51760-10202402AA - 30u"/0.76um Au OVER 50u"/1.27um Ni ON THE CONTACT AREA.
100u"/2.54um SnPb PLATING ON THE TERMINATION SECTION.

51760-10202402AALF - 30u"/0.76um Au OVER 50u"/1.27um Ni ON THE CONTACT AREA.
78u"/2.00um Sn PLATING ON THE TERMINATION SECTION.

PART NUMBER 51760-10202402AALF MEETS EUROPEAN UNION DIRECTIVE AND OTHER COUNTRY REGULATIONS AS DESCRIBED IN GS-22-008.

4. MANUFACTURER'S NAME, P/N, AND DATE CODE TO APPEAR ON THIS SURFACE.

5. PRODUCT SPECIFICATION GS-12-149.
APPLICATION SPECIFICATION BUS-20-067.

PCB NOTES:

- 6. ALL HOLE DIAMETERS ARE FINISHED HOLE SIZE.
- 7. MOUNTING HOLES, WHERE APPLICABLE, ARE UNPLATED.
- 8. $\varnothing .0453 \pm .0010$ [1.151 \pm 0.025] DRILLED HOLES PLATED WITH .0003 [0.008] MIN SnPb OVER .001 [0.03] TO .003 [0.08] Cu PLATING TO ACHIEVE $\varnothing .040 \pm .003$ [1.02 \pm .07] HOLE.
- 9. "DIM XXX" TO BE DETERMINED BY THE CUSTOMER.
- 10. CONNECTOR KEEP-OUT ZONE.

CONFIDENTIAL

mat'l code		SEE NOTE		tolerances unless otherwise specified		CUSTOMER		A FCI www.fciconnect.com	
lfr	ecn no.	dr	date	linear	.XX \pm .01/0.X \pm 0.3	COPY		title	
C					.XXX \pm .005/0.XX \pm 0.13	projection		2P + 24S + 2P RIGHT ANGLE SOLDER RECEPTACLE	
				angles	.XXX \pm .0020/0.XXX \pm 0.051			product family	
					0 $^{\circ}$ \pm 2 $^{\circ}$			PwrBlade	
				dr	J. SHAFFER 05-10-01	INCH/MM		code	
				enrg	J. ALLISON 05-10-01	scale		size	
				chr	J. ALLISON 05-10-01	1:1		dwg no	
				appd	J. ALLISON 05-10-01	A		51760-10202402AA	
sheet index	revision sheet								213
									3

Tous droits strictement reserves. Reproduction ou communication a des tiers interdite sous quelque forme que ce soit sans autorisation ecrite du proprietaire. Propriete de c FCI. Droits de reproduction FCI.

A
FCI

All rights strictly reserved. Reproduction or issue to third parties in any form whatever is not permitted without written authority from the proprietor. Property of FCI. Copyright FCI.

B

A

B